

Installation and user guide for E56 Apk Calibration.

This user manual is to guide the personnel of Service Center to operate the Apk Calibration for E56

Calibration apk is needed to perform calibration of hardware components including Light Sensor, Proximity Sensor and G-Sensor on E56 devices.

This manual will describe the operation steps of calibration in sequence of Light Sensor, Proximity Sensor and G-Sensor.

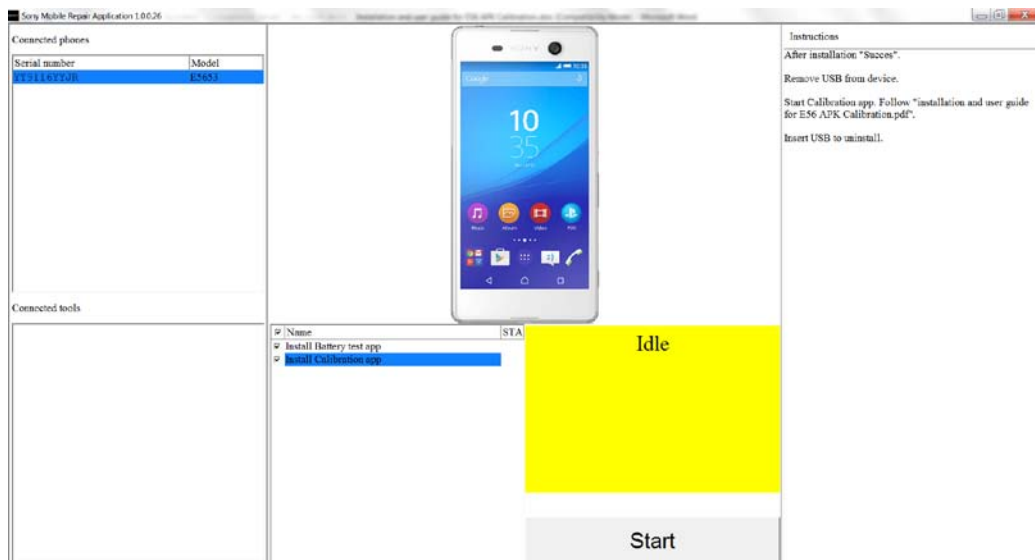
Contents

1	Operations.....	2
1.1	Install APK.....	2
1.1	Light, Proximity and G sensor calibration.....	4
1.4	Uninstall APK.	7
1.5	Disable debug mode.	8

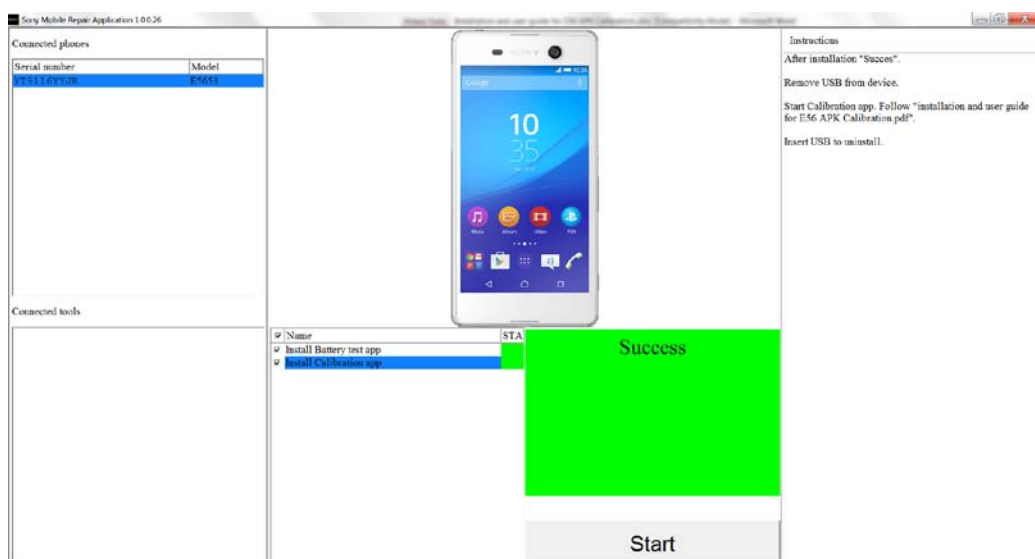
1 Operations

1.1 Install APK

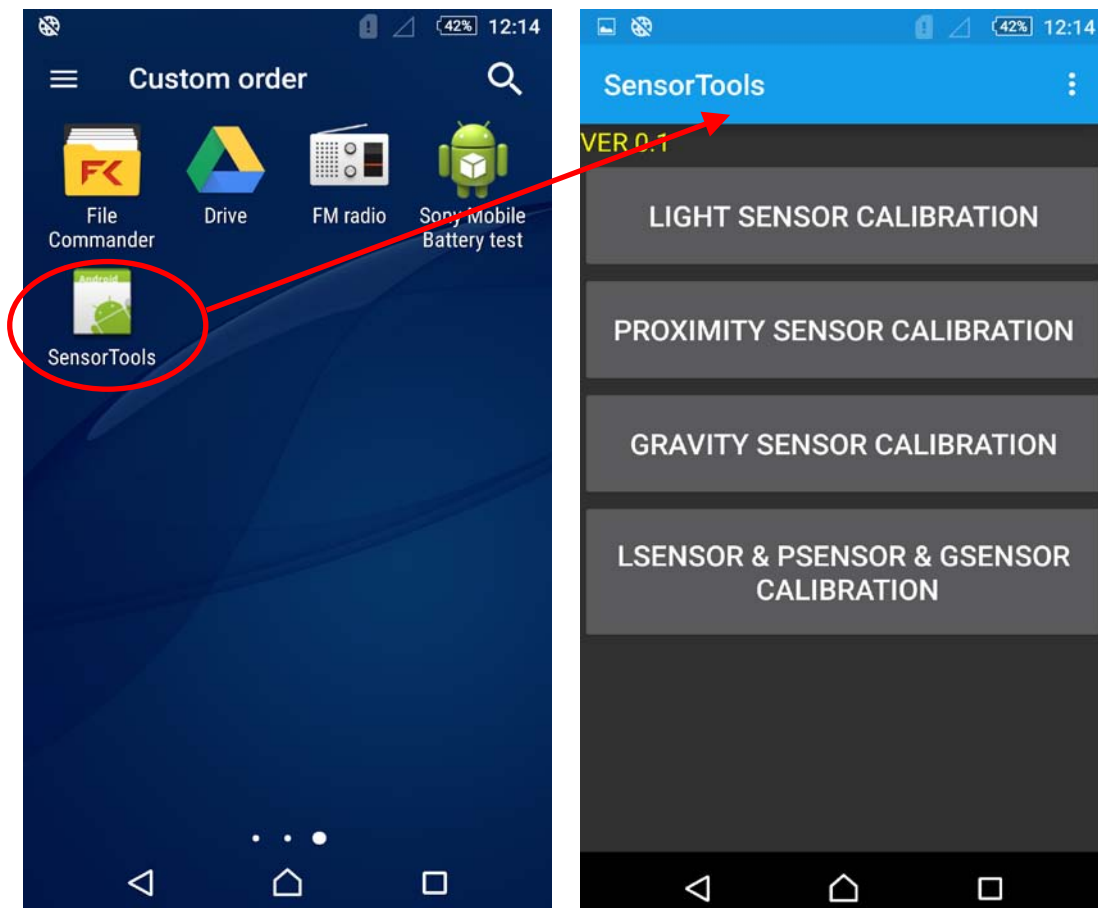
Enable USB debug mode in phone and connect to Sony Mobile Repair Application



Press **Start** to install Calibration app.
When Success installation, then remove USB from device.

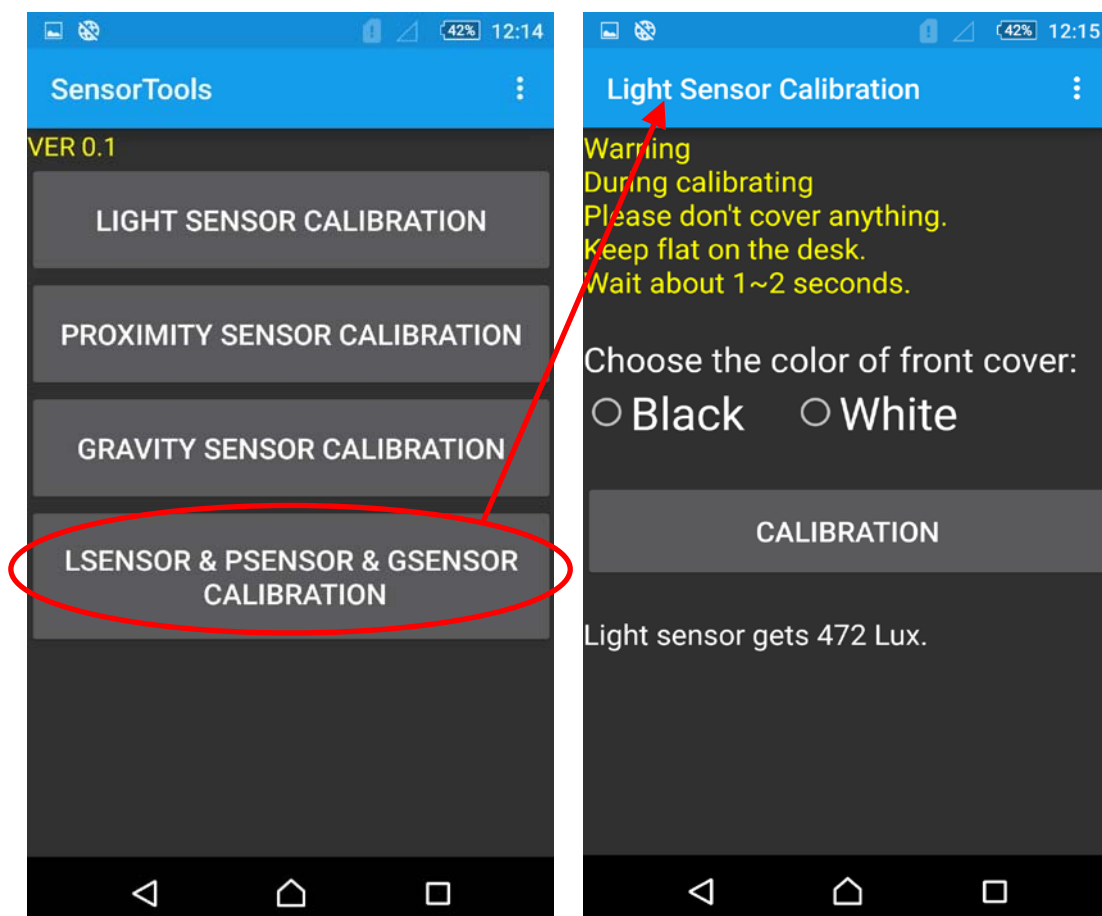


Press Sensor Tools to enter Sensor Tools menu.

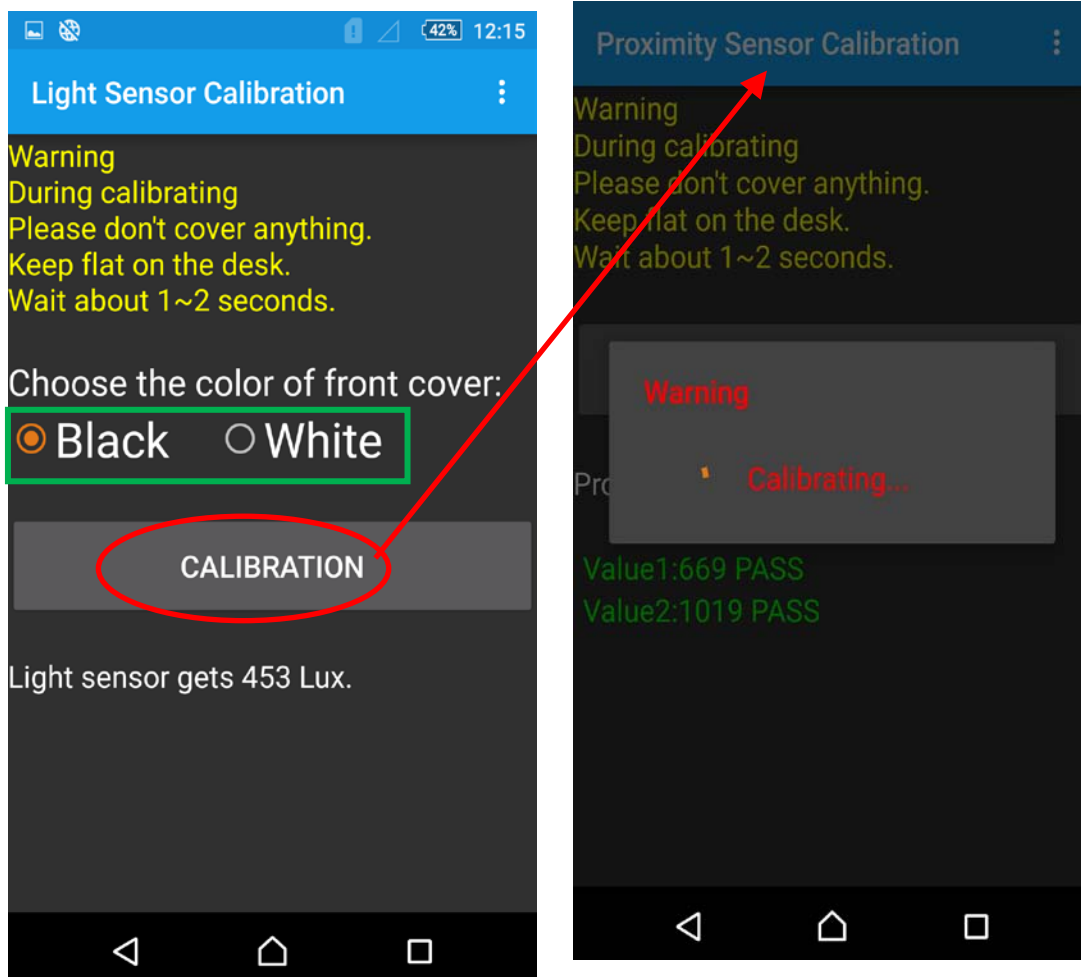


1.1 Light, Proximity and G sensor calibration.

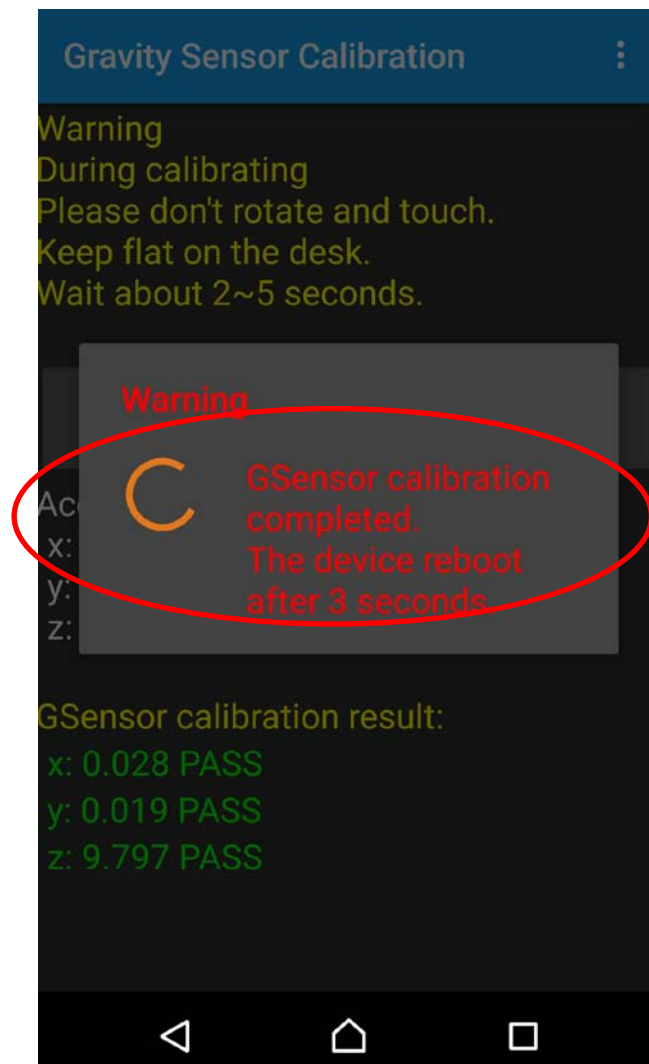
- (1) Select "LSENSOR & PSENSOR & GSENSOR CALIBRATION" item in calibration main menu to enter the page of Light Sensor Calibration.



- (2) Select the color of the front, Black or White.
Select "Calibration". Calibration will start, Don't cover anything and keep flat on desk adjusted in level.
Note: after successful L and P sensor calibration G sensor calibration will follow.



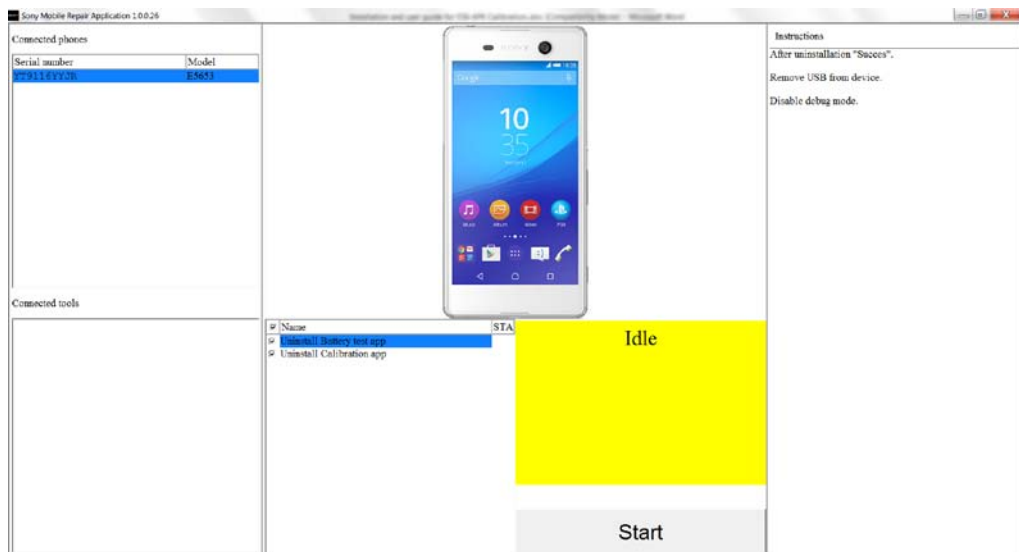
(3) After successful calibration the device will reboot



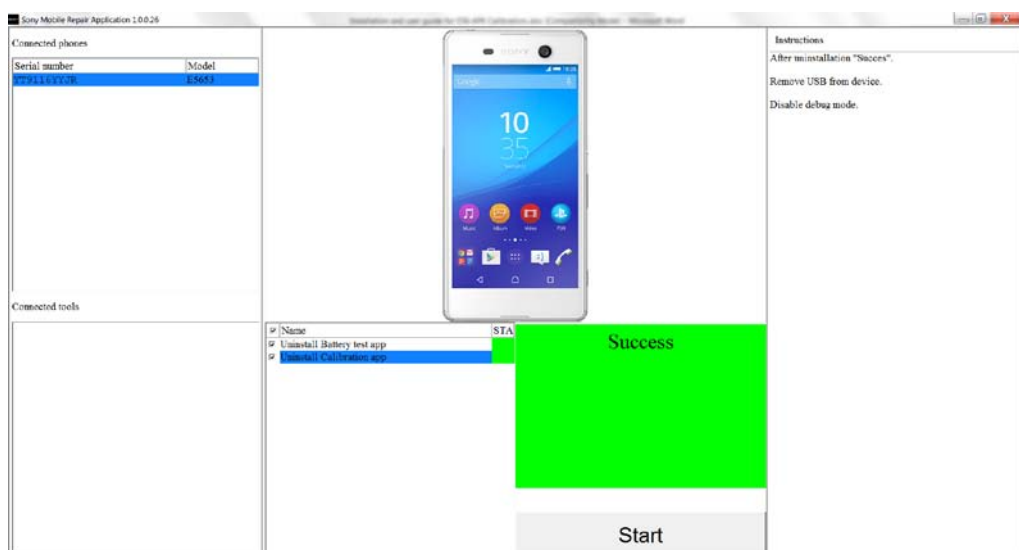
1.4 Uninstall APK.

After successful Calibration the calibration APK will be uninstalled.

If not connect phone to Sony Mobile Repair Application.



Press **Start** to Uninstall Calibration app.
When Success Uninstall, then remove USB from device.



1.5 Disable debug mode.

Remember to disable debug mode in phone.